

# DIAMASHINE®

## POLISHER/EDGER

### Standard Unit:

- 17" with pad driver and a box of 5 white pads
- 2-speed 1.5 HP DC motor with 50' 12/3 cord
- Comes with Deluxe Pad Driver and a box of five white pads
- Severe duty, hardened steel planetary gear box
- 4 gallon solution tank
- Weight post holds up to two 25 lb weights
- 113 lb net weight
- Model DEP17

### Optional Configurations:

- 15" Brush Cover with 15" Pad Driver and a box of 15" White Pads
- 17" Brush Cover with Dust Port and Hose with 1-1/2" to 2" Adapter and Floating Dust Shroud
- 17" Magnetic Quick Change Grinding Attachment with 6 Single Arrow Diamond Trapezoids – 16-20g or 30-40g



Converting between 15" and 17" is fast and easy.



Deluxe Pad Driver with 17" White Pad



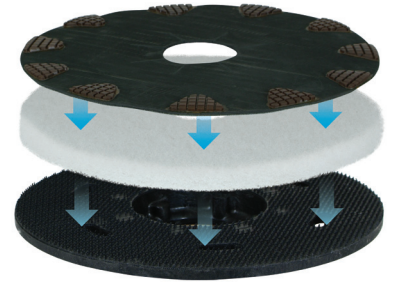
20 lb. weight is integrated around the motor.



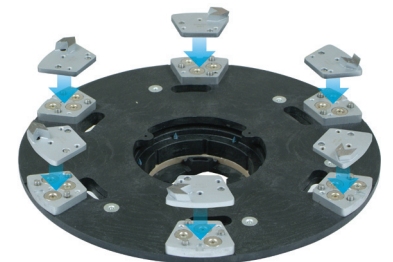
17" Brush Cover with Dust Port and Hose with 1-1/2" to 2" Adapter and Floating Dust Shroud

## Versatile System

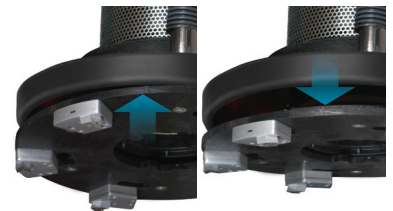
Use the Diamashine Polisher/Edger for surface prep, grinding and polishing concrete floors. Changing configurations is fast and easy.



DiamoDots with White Pad and Deluxe Pad Driver



Single Arrow Diamond Trapezoids with Magnetic Quick Change Grinding Attachment



Quick Change Flex Plate provides more consistent pressure to deliver superior results.



Grinds right up against walls



Super Pucks with Magnetic Quick Change Grinding Attachment