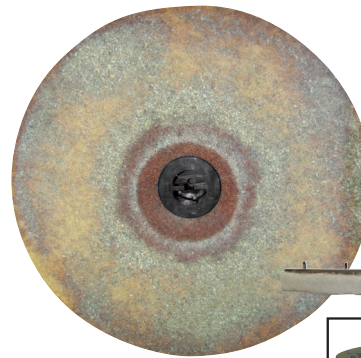
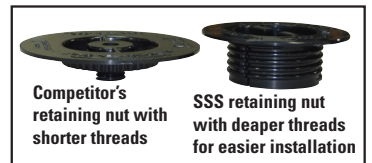


# DIAMASHINE® Burnisher



**Flat pad driver plate ensures even use of the ENTIRE pad**

**Used Pad**



**Competitor's retaining nut with shorter threads**

**SSS retaining nut with deeper threads for easier installation**

## Features:

- The first and only 27" Propane Burnisher designed specifically for burnishing concrete floors. Through repeated testing, balance, head pressure, angle of attack and speed have all been optimized for maximum production.
- Average production rate of over 3,000 SF per hour when used with DiamaShine HD diamond impregnated pads. No other 27" burnisher/pad combo even comes close.
- When used with DiamaShine 400G HD Diamond Impregnated Pads it is possible to remove all or nearly all of the white surface laitance commonly found on today's big box store slabs in just two passes, allowing specified gloss levels to be achieved.
- Wet burnishing option for producing the highest gloss of any 27" burnisher.
- Dust filtration for dry burnishing

## Uses:

- Densify and Burnish New Concrete
- Final Burnish on Polished Concrete, Marble, Terrazzo
- Burnish "Guard" Products
- Quickly Restore Shine and Distinction of Image (DOI) on Previously Polished Floors in 2 to 3 Steps

## Specifications

<b>Frame</b>	Powder Coated Cast Aluminium Alloy
<b>Engine</b>	18HP 603cc Kawasaki, EPA & CARB certified
<b>Ignition</b>	12 Volt Battery Starter
<b>Fuel Tank</b>	20 lbs, Steel with Overfill Protection
<b>Warranty</b>	2 yr on engine, 1 yr on machine, 90 days on wearable parts
<b>Performance</b>	Burnish 3,000 SF/HR
<b>Driver</b>	27" Flat Steel
<b>Pad Size</b>	27"
<b>Water Tank</b>	8 Gallon Single Feed
<b>Width</b>	29"
<b>Length</b>	53"
<b>Height</b>	46"
<b>Weight</b>	250 lbs
<b>Shipping Weight</b>	290 lbs

Available exclusively from  
Superior Surface Solutions

 **Superior Surface Solutions** 888-471-5227  
Learn more at [SuperiorSurfaceSolutions.com](http://SuperiorSurfaceSolutions.com)